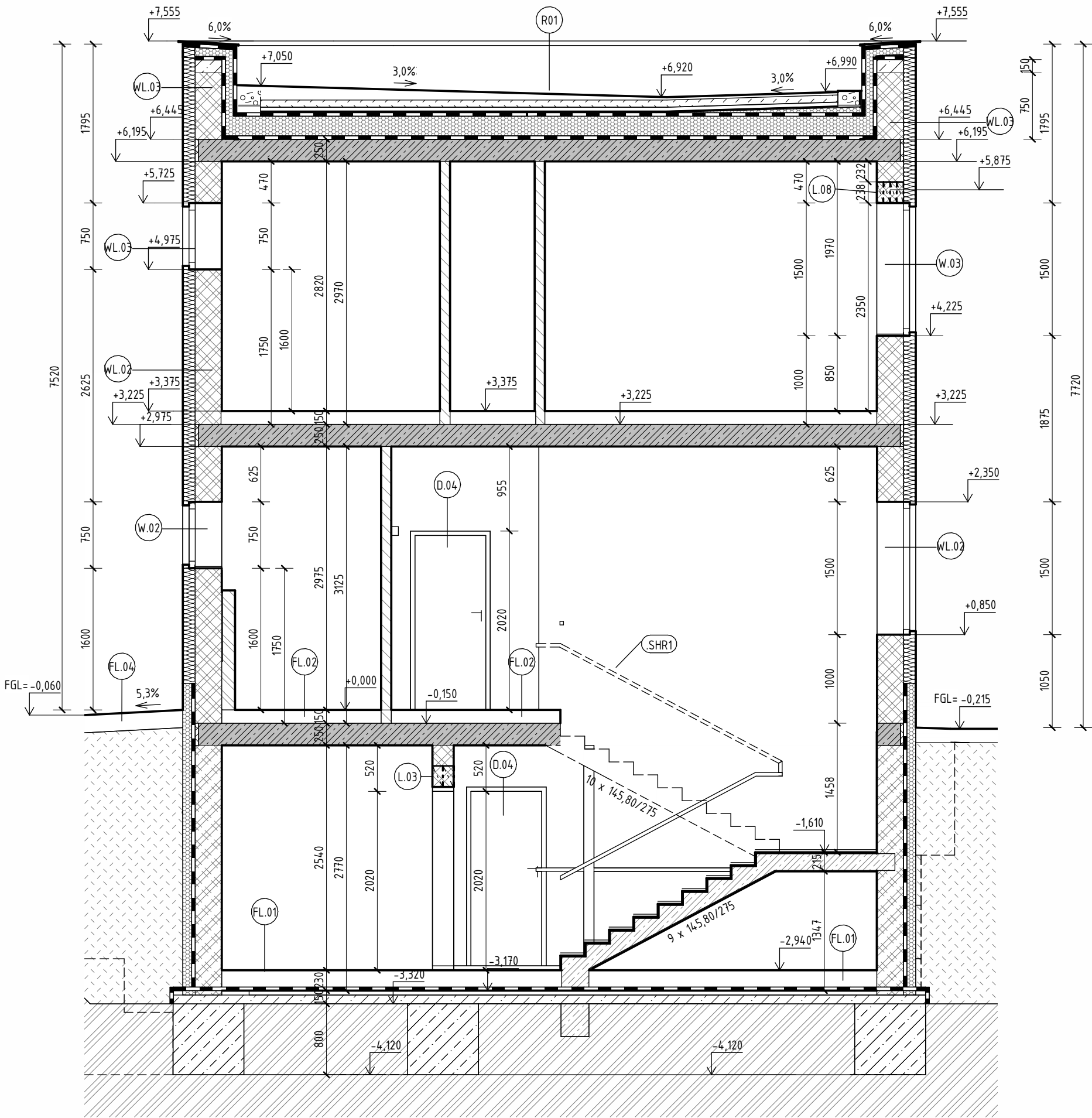


D.1.1 - 05 | SECTION B - B´

SCALE 1:50, FAMILY HOUSE WITH TATTOO STUDIO



LEGEND

LEGEND OF MATERIALS

- LOAD-BEARING MASONRY – CONCRETE PERMANENT FORMWORK BLOCKS 30 – SHAPE LOCKS, FILLED WITH C16/20 CONCRETE. BLOCKS MADE OF PLAIN VIBRO-PRESSED CONCRETE, APPROXIMATE CONCRETE CONSUMPTION: 0.19 m³/m² (0.63 m³/m³).
- LOAD-BEARING MASONRY – GROUND CERAMIC BLOCK, STRENGTH CLASS P15/P10, GROUND CLAY BLOCK FOR 240 mm WALL THICKNESS, LAID WITH THIN-LAYER MORTAR
- NON-LOAD-BEARING MASONRY – GROUND CERAMIC BLOCK, STRENGTH CLASS P10, GROUND CLAY BLOCK FOR 115 mm WALL THICKNESS, LAID WITH THIN-LAYER MORTAR
- THERMAL INSULATION MADE OF EXTRUDED POLYSTYRENE (XPS) WITH SMOOTH SURFACE, THICKNESS 140 mm, LAP JOINT, DECLARED THERMAL CONDUCTIVITY COEFFICIENT $\lambda_D = 0.036 \text{ W}\cdot\text{m}^{-1}\cdot\text{K}^{-1}$, COMPRESSIVE STRENGTH AT 10% DEFORMATION $\sigma_{10\%} = 300 \text{ kPa}$
- ORIGINAL SOIL
- PLAIN CONCRETE WITH GLASS FIBRE MAT – CLASS AND EXPOSURE ACCORDING TO THE STRUCTURAL LAYER COMPOSITION
- WATERPROOFING MADE OF SBS-MODIFIED BITUMEN MEMBRANES WITH REINFORCING LAYER ACCORDING TO LAYER COMPOSITION. THICKNESS ACCORDING TO LAYER COMPOSITION, FULLY BONDED OR TORCHED ONTO A PRIMED SURFACE

NOTES

- CONSTRUCTION LAYERS – SEE LAYER BOOK
- CONSTRUCTION DETAILS – SEE FOLDER D.1.2.
- CEILINGS – SEE CEILING DRAWING
- THE FIRST ROW OF CERAMIC MASONRY SHALL BE BUILT USING 300 MM STARTER BLOCKS ON BEDDING MORTAR.
- PERIMETER PLINTH INSULATION IS DESIGNED FROM XPS, 140 MM THICK, RAISED UP TO 300 MM ABOVE +0.000 LEVEL
- WINDOWS 003, 005, 009 INCLUDE EXTERNAL BLINDS INTEGRATED IN LINTELS
- FOUNDATION STRIPS AND PERMANENT FORMWORK BLOCKS SHALL BE CONNECTED TO BASEMENT WALLS – SEE FOUNDATION PLAN
- ALL DIMENSIONS ARE WITHOUT PLASTER OR CLADDING
- ALL DIMENSIONS MUST BE VERIFIED ON SITE ACCORDING TO ACTUAL CONSTRUCTION; THIS DOCUMENTATION DOES NOT REPLACE SHOP DRAWINGS!
- DOOR AND WINDOW OPENINGS ARE DIMENSIONED AS STRUCTURAL OPENINGS.
- IN CERAMIC MASONRY, SHALLOW CONTINUOUS CHASES MAY BE MADE AND FILLED WITH MORTAR. INSTALLATION ROUTING IS RECOMMENDED IN FLOORS OR SERVICE WALLS
- IN SANITARY FACILITIES, A WATERPROOF COATING SHALL BE APPLIED BEFORE FINISHING LAYERS; THE COATING MUST EXTEND AT LEAST 100 MM UP THE WALL
- FOUNDATION STRIPS MUST BE PLACED ON UNDISTURBED, SUFFICIENTLY LOAD-BEARING NATURAL GROUND

REFERENCES TO ANNEXES

- (Dxx) BOOK OF INTERIOR DOORS
- (Wxx) BOOK OF WINDOWS AND EXTERIOR DOORS
- (Lxx) BOOK OF LINTELS
- (Txx) BOOK OF CARPENTRY PRODUCTS
- (Kxx) BOOK OF SHEET METAL PRODUCTS

OTHER PRODUCTS

- (SHR1) STAIRS HANDRAIL – WOODEN
- (SHR2) STAIRS HANDRAIL – STEEL
- (FTSR) FOLDABLE TOILET SUPPORT RAIL
- (EPH) CARBON FILTER HOOD

±0,000 = 488,3 m.a.s.l.,B.H.S
/ COORDINATE SYSTEM S-JTSK

COURSE	BACHELORS' THESIS		<div><div>T</div><div>FAST</div></div>	
DRAWN BY	Projektant			
SUPERVISED BY	Schvalovatel			
INVESTOR	-			
LOCATION	Krokočín, č. p. 730/2 a 728/č, okres Třebíč, Kraj Vysočina			
PROJECT TITLE	FAMILY HOUSE WITH TATTOO STUDIO		PAPER FORMAT	594x420 (A2)
BUILDING OBJECT	SO 01		DATE	20.5.2025
PART	D.1.1 ARCHITECTURAL BUILDING SOLUTION		PROJ. PHASE	DPS
DRAWING TITLE: SECTION B-B'			SCALE	DRAWING NO. D.1.1-06